

eBoard

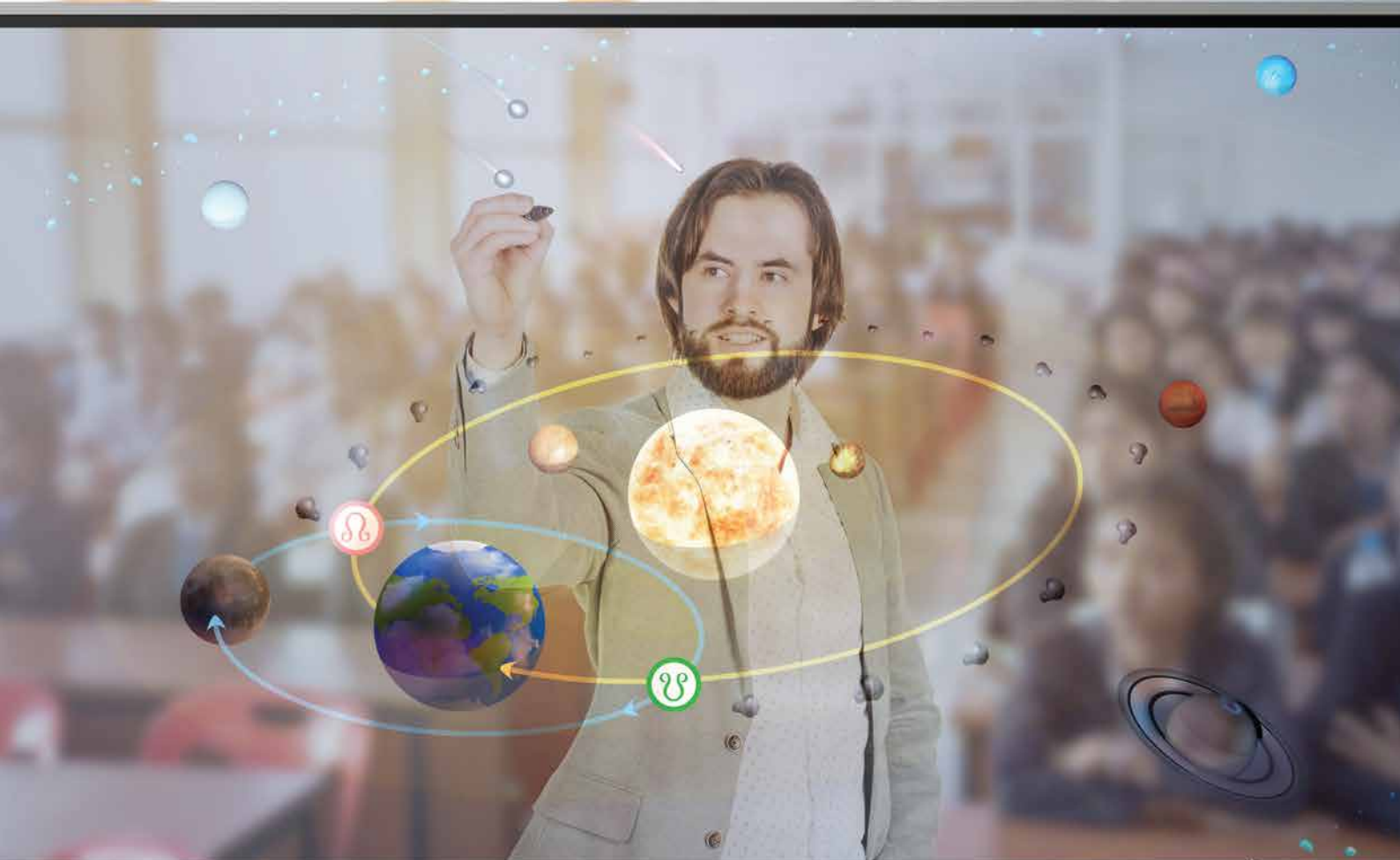
INTERACTIVE DISPLAY SOLUTIONS

Interactive Multi-touch Screen | uTable | Accessories

LED



4K



eBoard

Explore your creativity with our latest technology

eBoard is the perfect solution for bringing innovation into the room



Multi-touch

Infrared Technology allows simultaneous multi-touch points, which offers multiple users to write or draw on the screen at the same time. You can experience seamless touch with gesture Recognition.



ScreenShare Pro

Instant air drop sharing allows wireless presentation and also mirror all the multimedia resources from PCs, tablets and smartphone etc.



Android Platform

Built in Android Platform provide easy access to online resources and applications.



Stunning Visual

Ultra HD 4K Resolution Display enables clear and colourful visibility of images and text with eye caring features including anti-glare free, flicker-free and blue light emission.



eStylus

A unique "Pen ID" technology allows to set two different colours on two different pens and annotate simultaneously on note app.



Air-Gap

The gap is less than 1mm, achieves superior sensitivity and seamless touch experience.



Education / Schools

Solutions for a fully integrated lesson for educator and students and ensure memorable learning experience.



Corporate / Small Business

Ideal solutions for all industries. Creating engaging place for partners, employees and customers.



Government / Professionals

Solutions for more dynamic meeting. Delivers better communication and collaboration with multiple users with direct access.



eBoard

Leading Touch Technology



ARM Cortex A73 Dual Core
+ A53 Dual Core



4K Resolution
+ 4K Annotation



20 points Multi-touch



Android 8.0

eTrolley *Mobile Stand*

Matte Black

Easy Height Adjust

range from 1m to 1.5m, control by eBoard side tool bars.

180° Tilt (Option)

tilt into a fully flat table top.

Silence Wheel

360° directions.

Accessory Tray

release your hands when moving around.



Wall mount bracket

Fits most 55" to 86" eBoard display panel and TV's

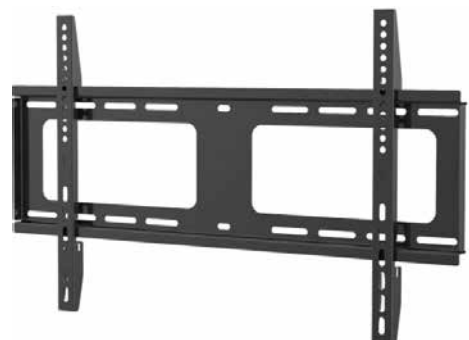
Key Features

Suits Screen Size : 55" to 86"

Tilt Range : -10° ~ 0°

VESA : 200×200, 300×300, 400×200, 400×400, 600×400, 600×600

Max Weight Load : 120kg



CATEGORY		eBoard 65 EE	eBoard 75 EE	eBoard 86 EE
DISPLAY PANEL	INCH	65 inch	75 inch	86 inch
	RESOLUTION	3840 x 2160 (4K x 2K)		
	BRIGHTNESS	350 cd / m ²	330 cd / m ²	
	CONTRAST RATIO	1200:1 (Typ.)		
	VIEWING ANGLE	178° / 178°		
	PANEL RESPONSE TIME	8ms(Typ. GTG)		
	ASPECT RATIO	16:9		
	REFRESH FREQUENCY	60hz		
	BEZEL COLOR / TYPE	Grey, Silver, Black / Aluminium & Metal Frame Round		
	PANEL	Min 30,000 hour		
INPUT / OUTPUT	HDMI Input	3 PORTS - Side		
	HDMI Output	1 PORT (Side, 4k@60Hz or 2k@60Hz)		
	VGA(DSUB) Input	1 PORT		
	AV INPUT	1 PORT		
	USB TOUCH	2 PORTS		
	USB v3.0	3 PORTS (2 FRONT ; 1 SIDE / Type-A)		
	USB v2.0	3 (2 FRONT / 1 SIDE)		
	USB C	-		
	RS232C (9600 bps)	1 (Bottom / DE-9F)		
	AUDIO	Stereo PC Audio IN / Earphone OUT / Coaxial Digital Audio OUT		
	SPEAKER	12W X 2		
NETWORK	1 Port GIGABIT ETHERNET & Wi-Fi Module (802.11a/b/g/n/ac)			
WIRELESS DISPLAY	SCREEN SHARE PRO	Stream pictures, videos, music, and documents from mobile device to eBoard / Share Content / Remote Control / Stream eBoard Disply to Mobile Device / Support IOS, Android, and DLNA Clinet		
ANDROID PLATFORM	CPU	ARM Cortex A73 Dual Core + Cortex A53 Dual Core		
	GPU	Mali G51		
	MEMORY	3G RAM / 16G FLASH		
	OPERATING SYSTEM	Android 8.0		
INTERACTIVITY	TYPE	IR sensor		
	INTERPOLATION RESOLUTION	32767 x 32767		
	TOUCH ACCURACY	>= Φ3mm		
	GLASS	Level 7 of Mohs Standard - 4T Tempered glass		
	TOUCH POINT	20 Points Touch (Basic 20 Touch / 10 Writing)		
POWER	DETECTION METHOD	Finger, brush-pencil, special pen or any opaque object		
	POWER(AC)	100V ~ 240V		
	POWER CONSUMTION / STAND BY	250W	400W	500W
	ENERGY RATE	StandBy UNDER 0.5W 8 STARS		
MECHANICAL	DIMENSION (mm)	1489 x 897 x 86	1710 x 1020 x 86	1957.2 x 1160 x 86
	PACKAGES ET BOX (mm)	1656 x 1050 x 204	1860 x 1170 x 280	2211 x 1370 x 280
	VESA® Hole Pitch (mm)	400 x 600, M8 Screw	600 x 800, M8 Screw	600 x 800, M8 Screw
	NET WEIGHT	46kg	52kg	75kg
	GROSS WEIGHT	52kg	71kg	102kg
ENVIRONMENTAL	OPERATION TEMPERATURE	0 ~ 40°C		
	STORAGE TEMPERATURE	-20 ~ 60°C		
	OPERATION HUMIDITY	20 ~ 80% RH (No Condensation)		
	STORAGE HUMIDITY	10 ~ 90% RH		
	OSD (LANGUAGE)	Multi Languages		
ACCESSORIES		Power / D-Sub / HDMI cable, User's Guide, Remote control etc		
OPTIONS		Wall Mount Bracket / Elctronic motorised mobile stand / MT21 or Mt 43 PC module		



Learn more at www.a1-sys.com

For additional questions contact
info@a1-sys.com, 1300 100 401

